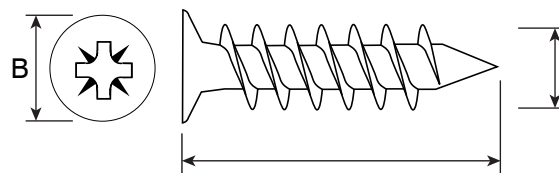
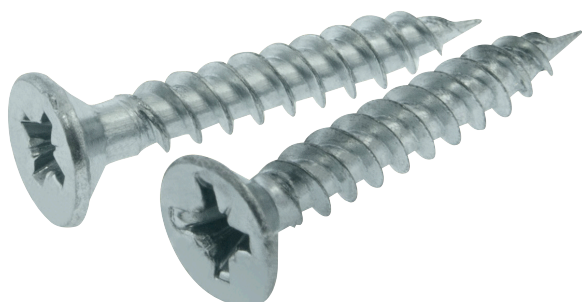


Product Code: QWS10-25

Description: 10 x 2.5" Twin Thread Countersunk Pozi Screws



Dimensions

Size (Imperial)	10 x 2 1/2"
Size (Metric)	4.6 x 60mm
Head Diameter	10mm

Materials

Bright Zinc Plated Steel

General Information

Head Type	Pozi Countersunk Head
Driver Bit Size	No. 2

Additional Information

Twin threads with parallel flank enabling faster insertion and greater pull out resistance.

Packaging Overview

Box Of 100 Screws

Directives

RoHS 2: 2011/65/EU & RoHS 3: 2015/863/EU

REACH: 1907/2006/EU